



St. Thomas Lutheran Church News

St. Thomas Lutheran Church is a Christ-centered community that lives, shares, and celebrates God's grace with all people!

June / July 2025

XLVII Issue 6

From the Senior Pastor

As the Nicene Creed moved from the Council of Nicaea and into use by the Church in her theological scholarship and her worship, eventually, the creed changed. What was adopted in 325 included curses against those who believed in Arianism; it also included only a line about the Holy Spirit. By the next council, the Council of Constantinople in 381, the creed looked much like it does today. Scholars attribute the changes to the creed's use in liturgies, reminding us that how we worship impacts how we come to believe. Besides dropping the anathemas, the creed includes a longer paragraph about the Spirit.

Of course, what was added seems to be about more than the Spirit, after all it introduces the remaining phrases with separate verbs—we believe, we acknowledge, we look for. But Luther maintains that these things—the church, baptism, resurrection, the life to come—are how the Spirit does her work of making holy us and the church and the world. Luther's point is that, however we are made holy, it isn't by our works and it isn't alone.

However we are made holy, it isn't alone.

This is significant to a world where one in three adults report feeling lonely and one in four report not having social and emotional support. Statistically speaking, that means someone beside you at St. Thomas on Sunday is lonely. Someone who can't make it to church is lonely.

Lots of folks wonder about why Lutherans say they believe in a catholic church. If "catholic" means "universal," why not say so? It is a good question, but I wonder why we don't have a harder time saying we believe in the church at all? Here we are, a community, but still within our midst of people who are lonely. If we think about the church, catholic, we know that there are Christians throughout the world who are persecuted for their beliefs. How can we believe in this?

I believe, though, that when we speak these words, we are always speaking them to ourselves, as aspiration, as prayer that what we might become, by the word of the Holy Spirit, what we say we believe about ourselves, as much as what we say we believe about God. We lay these truths before God in the hopes that we might be formed again, transformed again into the image of God, and that as we confess, that transformation won't be alone.

In peace,

Pr. Adrienne

Pastor Adrienne

**Pastor Adrienne will be out of the office
Monday June 23 through Sunday July 6.**

One more thing—I am always happy to meet with you! You can schedule an appointment to meet with me [here](#) or by [contacting the church office](#).

Speaking of Contacting the Church Office...

Limited Office Hours

Erica will be out of the office for the first two weeks of June. The church office will be open limited hours Monday June 2 through Thursday June 12, and closed on Thursday June 5, Friday June 6, and Friday June 13. Normal office hours (M-F 9 a.m. to 4:30 p.m.) will resume Monday June 16.

Office Closures in June and July

The church office will be closed:

- Thursday June 5
- Friday June 6
- Friday June 13
- Thursday June 19
- Friday July 4

Pastor Adrienne and Pastor Lecia Out of Office

Pastor Adrienne and Pastor Lecia will be out of the office Thursday June 5 and Friday June 6 for the IK Synod Assembly.

From the Pastor of Youth and Christian Nurture

As I write this, we are preparing for Vacation Bible School. We are excited to welcome sixteen students and thirteen youth and adult volunteers to spend three days together. The theme for our time is "Filled by the Holy Spirit," which feels very daring to me.

We know the stories of the Spirit hovering over the waters of creation, the heavenly dove descending at Jesus' baptism and the gift of the Holy Spirit on Pentecost. Yet, we don't often talk about the Holy Spirit beyond our recitation of the creed in worship, much less name the Spirit's work in our own lives. (According to the Small Catechism, "the Holy Spirit has called me through the gospel, enlightened me with gifts, made me holy, and kept me in the true faith." And that's not all the Spirit does!) I've heard theologians joke that, as mainline Christians, we are more "bi-natarian" in our faith than Trinitarian. We are comfortable with the Creator and the Redeemer, but a little leery of the Holy Spirit.

But I know the Holy Spirit is always active, always on the move and unpredictable. The Spirit often surprises us by working in exciting and wonderful, but unexpected ways. The Spirit can take our talents and gifts and multiply them, creating something even bigger and better than we could on our own. What might be unleashed in our midst when we have a group of children looking for the Spirit to act? How might our church and our world be inspired? I can't wait to find out!

Your partner in ministry,

Pastor Lucia

Pastor Lecia

From the Director of Music

During the last two summers, congregants have offered their own special music during worship services. Because it has been so successful, we will continue our "Make a Joyful Noise!" program this upcoming summer. All ages and ability levels are encouraged to offer their gifts. Our goal this year is to continue filling both services each Sunday with music. Those interested can [contact me](#) with their ideas for available dates. I am happy to help in any way.



Matthew Benkert

Matthew Benkert

From the Finance Committee

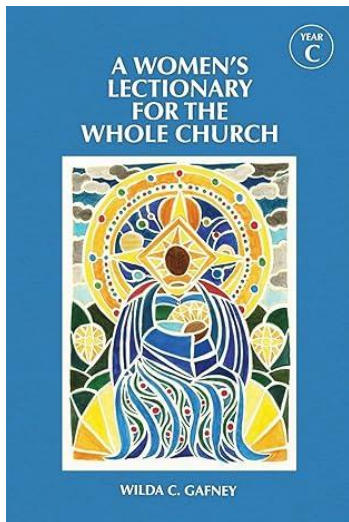
We are grateful to those who have made additional gifts to support our congregation and its ministries. Please note that gifts offered for specific ministries or mission partners are held in our congregation's restricted funds for their specified purpose and do not affect the general fund nor our congregation's daily expenses.

Financial status at the end of April (33.33% of the year):

	Amount	Percent	2024
Income	\$181,079.24	38.43%	32.26%
Expenses	\$174,112.20	36.90%	34.71%
Net Income	\$6,967.04		-\$11,256.92

Click [here](#) to give to St. Thomas.

The Word in Worship



On any given Sunday, we read four texts in worship: one from the Hebrew Scriptures, a Psalm, an Epistle, and a reading from one of the four Gospels. These readings generally come from the Revised Common Lectionary (RCL), a three-year cycle of texts created by an inter-denomination group called "The Consultation on Common Texts."

Using the RCL unites us with other churches through common texts, however, not all churches use the RCL. The RCL is not without its problems. Some of the fundamental texts of faith like the stories of Creation, Noah's Ark, and the Giving of the 10 Commandments are only heard in worship once every three years and some stories are never heard. Many stories that include women, queer folk, and people of color are omitted completely.

Biblical Scholar and Episcopal priest Wilda Gafney has created an alternative lectionary that addresses some of these concerns called *A Women's Lectionary for the Whole Church*. In 2021-2022, we used Gafney's Year A lectionary. This summer, we will use her Year C lectionary. Similar to the RCL version for this year, the focus is on prophecy. Gafney's texts move more or less chronologically through the prophets: the divided kingdom, the Babylonian occupation and exile, and the hope for return. The gospel texts focus on Jesus's journey from the mount of transfiguration to Jerusalem and the cross.

It is always challenging to shift away from the common lectionary and the ways we share in the Word with other Christians, but hearing new texts can open our ears to the needs and hopes of Christians who look and live out their faith differently than us.

Celebrating Our Ministry

Group Peer Support

In honor of Pride Month, our GPS (Group Peer Support) facilitators will host two one-time group sessions for LGBTQIA+ folks and allies, offering safe, confidential spaces for sharing, listening, and connection on **Sunday, June 1 at 11:30 a.m.** These are not therapy sessions, but peer-led circles of support, each with its own focus and audience.



In the GPS group for LGBTQIA+ folks, participants will have space to reflect, connect, and be supported—whether Pride brings joy, grief, celebration, or complexity.

In the GPS group for allies, participants will have an opportunity to grow in understanding and presence; wherever you are on the journey of allyship, there is room for you here.



Choir Concert

On Sunday, May 4, the St. Thomas Choir performed Mozart's Coronation Mass with the choirs of First United Church, First Presbyterian Church, and First Christian Church as well as musicians from IU Jacobs School of Music. Thank you to our choir, Choir Director Ben Wegner, Director of Music Matt Benkert, and Choral Scholars Cailin Jordan, Seonjeong Park, Will Hawkins, and Michael Eaton.

Annual Program Meeting

Our Annual Program Meeting was held on Sunday, May 18. In addition to a celebratory potluck and video, the congregation passed the final changes to an updated constitution, redirected funds for work with refugees, and thanked three outgoing council members: Sam Eichmiller, Randy Nye, and Kaye Hill.



Congratulations Graduates!

Irene Fogleman, daughter of Sarah Fogleman, is graduating from Bloomington High School South and will be attending Indiana University as a Cox Civic Scholar.

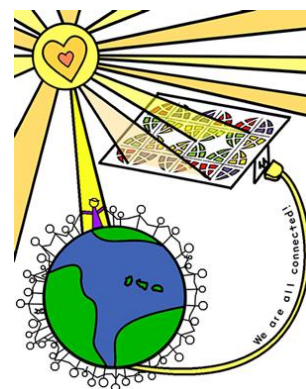
Owen Miller, son of Scott and Audra Miller, is graduating from Bloomington High School South and will be attending Louisiana State University studying chemical engineering.

Lillian Rademacher, daughter of Daniel Rademacher and Catherine Rademacher-Roeger, is graduating from Butler University with a Bachelor of Science.

Marcus Westphal, son of Matthias and Wendy Westphal, is graduating from Bloomington High School North.

Creation Care Calling Pollinator Planting Workshop

Are you interested in adding or improving pollinator habitat on your own property? Join Camille Verendia of the US Fish and Wildlife Service for this workshop on **Saturday, June 14, from 9 a.m. to 11 a.m. at Rogers Family Park!** During this two-hour workshop, participants will attend four sessions to learn how to restore pollinator habitat. Topics include site preparation, species selection, and learning how to identify plants and pollinators. This workshop is offered as a no-charge event with support from the Urban Greenspace Team and biologists from the US Fish and Wildlife Service. A restoration guide will be provided for all participants. Register in advance [here](#).



New Member Corner

Scott and Audra Miller

They have lived in Bloomington for 21 years. Scott works in industrial security & contracts at Crane, and Audra is a therapist. They have two sons, Gavin (20), who lives in Bloomington and Owen (18), who is a senior at Bloomington South. Scott enjoys golf and being a high school baseball umpire. Audra enjoys trail running and golf.

Upcoming Events



Worship Time Change

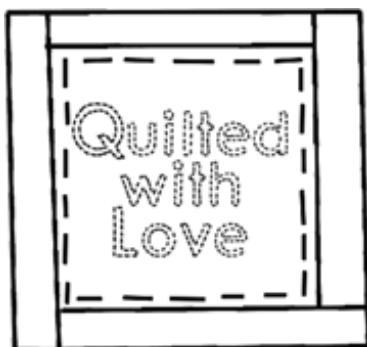
Beginning **Sunday, June 1**, St. Thomas worship will be held at **8:30 a.m. and 10:15 a.m.** We will keep this summer schedule until Sunday, August 18 ... except for outdoor worship service on July 13.

Summer Fun

Everyone is invited to join us at the Switchyard Park Splash Pad on **Sunday, June 1**. Have a popsicle with us at **2 p.m.** and then play until 3:30 p.m. Feel free to drop it for any part of it to play with your St. Thomas friends!

Pentecost Languages

Multi-Lingual Participants Needed for Pentecost Service. If you are interested in participating in a multi-lingual reading during the **Pentecost celebration on June 8**, please [contact the church office](#). Also let us know which languages you are able to speak.



St. Thomas Piecemakers

The St. Thomas Piecemakers will continue making quilts through the summer! These quilts will go to refugees and disaster victims around the world. Aside from their traditional use, they're used as clothing and shelter, among other things. Donations of cotton twin size flat sheets for backing and fabric for tops may be dropped off in the LWR tote in the coat room. Upcoming meetings are on **Saturdays June 14 and July 12 at 10 a.m.** We'd love to have you join us!

Come Together: News from the Outreach and Community Care Committee

Summer Storytime Between Services: Children of God, stay after the early service or come early for the late service for storytime in the library (just to your left as you enter through the main doors) at **9:45 every Sunday morning in June and July**. Someone from our congregation will be reading one of the fantastic books for children and families that we have in our library!

Summer Campfire and S'mores, June 21, 7 p.m. Gather outside on the circle by Heritage Hall for an hour of lawn games, singing, and s'mores. Bring a lawn chair.

Next Outreach and Community Care Meeting, July 21, 7:30 p.m. We'll be meeting in July to plan for the fall. You are warmly invited to join us and share your ideas. We meet via Zoom, so you can relax on your porch and join in. Contact the office for a link.

Ice Cream Meet Ups

Calling all confirmation students and high school youth! Meet up with Pastor Lecia for conversation and ice cream at Jiffy Treet (223 S Pete Ellis Dr) on **Sundays June 29, July 20 and August 3 between 7 p.m. and 8 p.m.** Please RSVP to [Pastor Lecia](#) if you plan to come!



Benefit to support the work of St. Vincent de Paul!

We invite you to enjoy an "Afternoon in the Park" on **Sunday, June 29 from 1 p.m. to 4 p.m.** at the Switchyard Park Pavilion. There will be food trucks, raffled theme baskets, silent auction for restaurant gift cards, live music, face painting, games, and more. Help support those in need by purchasing a \$100 St. Vincent de Paul raffle ticket and have a chance to win a cash prize! We will be selling the tickets (cash or check only) after each service in the Narthex on **June 15 and June 22**. Please consider helping others in need with rent, utilities, transportation, furniture, and appliances, one person at a time while taking a chance with your purchased ticket!

Solidary Sleep Out: Annual Fundraiser for Beacon, Inc.

As St. Thomas Lutherans, we take housing insecurity seriously. That is why we are sleeping outside on the night of **Friday, June 27** to raise awareness of homelessness and raise funds for Friend's Place, Beacon's overnight shelter and the largest emergency shelter for women in our region. You can help in two ways:

First, join our growing group! **Sign up to sleep out [here](#).**



1. Once signed up, encourage others to join you in making a recurring gift to support nights of shelter for women. St. Thomas has been in first place, raising over \$600 already, but we need your help to stay there!
2. You can spread the message that ELCA Lutherans, like you, believe that God so loved the person sleeping in her car with her children that God sent God's only child into this world so that we can have eternal life.
3. Sleep outside. Two Lutherans, 7 and 10 years old, will be sleeping downtown for their third year in a row; if they can do it, so can you!

Second, our team, "When Luther Said 'Sin Boldly,' He Didn't Mean Ignore Housing Policy" aims to **raise \$5,475 to provide 365 nights of shelter** (each night costs \$15 per person). We are currently in first place among all the sleepout teams, but we need your help to stay there! **Make your gift [here](#).**

Outdoor Worship

Worship with us in the park on **Sunday, July 13** at the Sycamore Shelter at Lower Cascades Park. Our strum-along worship will be followed by a potluck, fellowship, and time for the adventurous to play on huge curly slides! Worship will begin at **10:45 a.m.** If you'd prefer to sit on something other than picnic tables during worship, bring a lawn chair. If you'd like to strum along, feel free to bring an instrument (hand drums welcome, too!). Please bring a dish to share and table service (plates, cups, silverware, napkins) for your family. Water and lemonade will be provided.



A few volunteers are needed to set-up and tear-down. Please email the church office to volunteer. Strum-along participants may also email the office for an advance copy of the bulletin to practice!

Save the Date! Advent Fundraiser for Sister Parish

What: St. Thomas Sister Parish Advent Fundraiser

When: Sunday, December 14, before & after services

Where: St. Thomas Lutheran Church, Narthex

Featuring local craft items from Chichipate, Jim Halvorson's Pottery, Kent Unger's Wooden Crosses, **and other donated handcraft items from our congregation's members & friends.**

That's where we need you! What is your passion? Can you knit, crochet, weave, sew, embroider, hook rugs, bake, make holiday candy, make candles, wreathes, ornaments, holiday cards, take photographs, do calligraphy, paint, work with metal or wood? Now is the time to START projects!



Come for the last-minute gifts, stay for the Children's Christmas Program!

Questions: Contact [Carol Seaman](#) or [Suzanne Halvorson](#).



Christian Nurture



Prayer at Noon on Zoom

It can be hard to find time to pray, especially when there is so much to worry about—so much to pray for. You are invited to a calm, quiet moment in the middle of the week to share requests and pray together—we gather for about 20 minutes. Our next gathering will be **Wednesday, June 4 at 12 p.m.** on [Zoom](#).

Pastor's Bible Study

Join the pastors for Bible Study on the upcoming Sunday readings on Monday afternoons at 1 p.m. in the Conference Room. There is no need to prepare ahead. We read the text together and explore what interests us and what it means for us today. Questions encouraged!

- June 2: Genesis 11:1-9; Psalm 104:24-34, 35b; Acts 2:1-21; John 14:8-17, 25-27
- June 9: Proverbs 8:1-4, 22-31; Psalm 8; Romans 5:1-5; John 16:12-15
- June 16: Isaiah 8:1-18; Psalm 34:11-22; 1 John 3:1-3; Luke 9:38-48
- June 23: Jeremiah 9:17-22; Psalm 126:1-6; Revelation 21:1-17; Luke 23:26-31
- June 30: Jeremiah 29:1-14; Psalm 33:8-22; James 5:7-11; Luke 21:29-36
- July 7: Jeremiah 31:2-6, 8-11; Psalm 118:14-26; James 5:1-6; Luke 13:31-35

Worship at Redbud Hills & Bell Trace

St. Thomas members and friends at Redbud Hills are invited to join us in the chapel for worship on **Monday, June 9 at 10 a.m.** Members and friends at Bell Trace are invited to join us in the Chapel for worship on **Monday, June 16 at 9:45 a.m.**



Ministry Opportunities for Getting Involved

Celebrating the Church's Birthday!

Pentecost is the time where we traditionally celebrate the birth of the Christian Church. This year, to share our joy, we will make special collections as birthday gifts to some of our Mission Partners. Please help fill the brightly wrapped gift boxes with items from the list below (*on next page*).

- Beacon, Inc.: Travel sized shampoo and other hygiene items
- New Hope for Families: New and gently used card and board games for families
- Mother Hubbard’s Cupboard: Dehydrated fruit packets, granola bars
- Pathways: art and craft supplies such as nontoxic markers, googly eyes, etc.

Save Those Coats!

Are you shuffling through your winter clothes and doing a purge? Save those coats! St. Thomas will participate with Trinity Episcopal in a Coat Drive in October.



Property Committee Work Days

Help with manual tasks such as decluttering, painting, occasional cleaning, or tasks that require special expertise such as electrical, plumbing, or drywall work. Join a work day on the second Saturday or third Tuesday every month.

Altar Flowers



Flowers bring the beauty of creation to our worship. To reserve an arrangement, contact the church office [via email](#) or sign the sheet on the bulletin board by the coat room by Wednesday each week. The Flower Guild makes the arrangements, and you may take the flowers home after the second worship service and then return the vase later. Each arrangement costs \$20, with “flowers” in the check memo line.

Prayer Chain

The Swiss theologian Hans Urs von Balthasar once said, “the most we can do through genuine prayer, is to make as much room as possible, in ourselves and in the world, for the kingdom of God, so that its energies can go to work.” We invite you to be part of a little group making room in the world for God to work in people’s lives. When prayer requests come, we receive an email and pause to pray. Occasionally we receive an update about those we hold in prayer. If you are interested in joining us, [email](#) Susan Colston.

Prayer Requests

Martin Luther said, “Pray, and let God worry.” When something worries you, others can carry you along in prayer. Send requests for prayer to Susan Colston [via email](#).



Lutheran Campus Ministry at IU



While most of the college students are away for summer break, LuMin will be refreshing the Rose House property. Thanks to a generous gift from the St. Thomas Mission Endowment Fund, Rose House will be converting what was formerly the therapist's room into a peaceful space for students. Fresh paint, new curtains, a new rug, and a few other items will transform the currently empty room into a quiet place where students can study, meditate, pray, or just step away from the chaos of everything. Prior to leaving, the students were surveyed about what they envisioned the space to look and feel like and so their thoughts will inspire LuMin as we pick out the paint colors and furniture for the area that the group has collectively dubbed "the Sanctuary."

If you are interested in helping LuMin to refresh Rose House--painting, cleaning, weeding, mowing, etc.--please reach out to Pastor Amanda at lutheran@iu.edu. At present we don't have any official workdays planned but are willing to work with people's schedules. Dedication for the new space and open house tours of Rose House will take place on Sunday afternoon August 24. More details for this and the cookout for new and returning students will be in the August newsletter.

Peace,
[Pr. Amanda Ghaffarian](#) (She/Her)
Rose House LuMin Campus Minister



Caring for Our Neighbors

From Our Mission Partner, Naomi Sveholm

What an odd mix of changes this time of year is. While the school year goes through the end of June, the graduating class leaves nearly a month earlier. We've had our last classes together and are only anticipating their school-leaving exams (next week as I write this). I say goodbye to my first literature classes by showing and awarding the films they made as part of their class (and hope to see them in my classroom again after a year's break). A long-time teacher, who arrived in Bratislava with my family seven years ago, is leaving the program. Our youngest says goodbye to his school to start a new one in the fall. And the biggest change for me is that I say goodbye to being Education Coordinator.
(continues on next page)



Endings and beginnings often go together, however. We are pleased not to say goodbye to Bratislava, except for a month in Minnesota this summer, and I'm looking forward to taking a more active role in the classroom once again, including teaching a new (for me) and more demanding course. I anticipate meaningful conversations with new groups of students this fall and hope to support the new coordinator in their role in CET. Another beginning for our family is finally connecting with professionals who can help our children with their language and other challenges. The kids have also started playing Gaelic football on weekends.

Change can be difficult, especially when the changes are not self-initiated or desirable. In change, we need support and community. I am grateful for your support through the years and I hope you continue to support each other during times of change.

Naomi

Naomi and Nick Sveholm teach English at a bilingual high school in Bratislava, Slovakia with the ELCA's Central Europe Teachers program. CET posts twice a week at [Facebook](#) and [Instagram](#).



Evangelical Lutheran Church in America

God's work. Our hands.

2025 ELCA Churchwide Assembly

The 2025 ELCA Churchwide Assembly will be held Monday, July 28 through Saturday August 2 at the Phoenix Convention Center in Phoenix, Arizona.

The ELCA Churchwide Assembly, the primary decision-making body of the Evangelical Lutheran Church in America, is a process of communal spiritual discernment. When the ELCA Churchwide Assembly convenes, its voting members meet with confidence in God's grace around word and water, wine and bread, to carry on their work on behalf of the entire church. Over the course of the assembly, voting members:

- Hear reports and review the work of churchwide officers, leaders and units.
- Receive and consider proposals from synod assemblies.
- Elect officers, board members and other leaders as specified by the constitution or bylaws.
- Establish ELCA churchwide policy.
- Worship together.
- Adopt a budget.
- Conduct other business related to the ELCA churchwide organization.

While not a voting member, Peter Iversen will be attending as a representative for higher education. Find resources, schedules, and videos [here](#).

New Hope for Families

Volunteer opportunities at [New Hope for Families](#): This is an exciting time at New Hope for Families as there are many volunteer opportunities now available. We invite you to become a part of the “Hope Movement” in moving families from homelessness to stable housing.



NEWHOPE
FOR FAMILIES

- **Early Learning Center (ELC) Classroom**
Assist teachers in the ELC classrooms. Duties may include: reading with children, supervising play, assisting during transition times (lunch, naps, etc.), assisting with field trips to Switchyard Park, light cleaning and tidying, and other administrative tasks related to our ELC classrooms. Volunteer shifts are 2 hours per week. (NOTE: Volunteers who wish to spend more than 8 hours per week in the classroom must complete additional steps, including a background check with fingerprinting, TB test, physical, and further training.)
- **Admin Building Host**
Answer phones and the front door of the Admin/ELC building; assist staff with administrative tasks; light clean and tidy. Volunteer shifts are at least 2 hours per week for at least 3 months.
- **Shelter Family Programming Volunteer**
Assist Family Programming Coordinator with activities and events for the children and families living in the New Hope Shelter. Volunteer shifts may vary but will likely be 2-3 hours per week, usually on Saturday or a weekday evening.
- **Summer Camp Volunteer**
From May to August, volunteers assist Summer Camp staff with daytime field trips and activities for school-age children. Volunteer shifts may vary; they are seasonal.
- **Donation Sorter**
Volunteers will assist with sorting in-kind donations, such as diapers, hygiene supplies, dishes, linens, etc. Shifts will be 2-3 hours on Wednesday or Thursday.
- **Move-Out Volunteers**
Assist Shelter staff on days when a family moves out of the shelter into their own home. Duties may include helping to pack boxes and bags into New Hope vehicles, traveling with New Hope staff to help unload belongings into the family's new home, and assisting with cleaning the vacated Shelter room in preparation for a new family to move in.

Anyone interested in becoming a volunteer should complete a [volunteer profile](#). In the profile, you can indicate which volunteer roles you are interested in, and New Hope will then contact you to schedule an orientation. Anyone interested in becoming a volunteer should complete a volunteer profile. In the profile, you can indicate which volunteer role(s) you are interested in, and New Hope will then contact you to schedule an orientation. Any questions about volunteering may be sent to amber@newhope4families.org or by phone at 812-334-9840, ext 119.

(continues on next page)

New Hope for Families' [Immediate needs](#): diapers (sizes 3–8) and Pull-ups (any size), baby wipes (unscented), toilet paper, toothpaste (any) and toothbrushes (adult), shelf-stable food (examples: peanut butter, crackers, canned beans). Donations can be placed on the shelving unit in the narthex, or money can be given via check made out to St. Thomas Lutheran Church with "New Hope for Families" in the memo. Thanks for standing in the gap for these local families in need.

Project Starling by the Lutheran School of Theology at Chicago

Project Starling is an innovative online learning platform developed by the Lutheran School of Theology at Chicago (LSTC) launching Summer 2025. With a goal of making theological education accessible to all, Project Starling will offer a rich array of courses, known as resources, as well as certificate programs, workshops, and training opportunities tailored for those seeking theological education.

Designed to support career and spiritual growth, Project Starling caters to a diverse audience, including those who aspire to leadership in the church, rostered ministers, pastors, deacons, lay leaders, individuals on personal spiritual journeys, and lifelong learners passionate about exploring faith and theology. Learners can choose from individual resources, or complete specializations—a series of interconnected resources—for a more in-depth educational experience.

The platform provides both free and paid options, allowing learners to earn certificates and credentials upon completion. Whether pursuing professional development, spiritual formation, or simply learning for its own sake, Project Starling offers accessible and high-quality theological education for all. Learn more [here](#).

Living Lutheran Subscriptions and Financial Support

The ELCA publication *Living Lutheran* provides news about the ELCA and its local and global companions. It covers religious news and social issues, congregational life, global and domestic mission, family matters, spiritual practices and resources, and more. The *Living Lutheran* is back in print! Because this was not in our 2025 budget, a generous donor has covered a year's subscription for St. Thomas households who attend 50% of the time or more as well as new members and shut-ins. If you value this resource and would like to share it with other St. Thomas families, **consider a small donation that will help us provide the subscription this year and allow us to gradually increase the budget line.** Each subscription costs \$17 per family (which provides a \$2 discount). If you had planned to subscribe, consider donating your full subscription price to St. Thomas; we'll cover your subscription and the extra donation will provide for another family! [Donate here](#) or with a check marked "Living Lutheran."



Prepare



in a
Year

Step 5: Grab and Go Bag



Everyone should have their own kit (some supplies are for the group). Encourage kids to make their own kits, too, because what's important to them, may not be as important to you. In the event of rapid evacuation, you'll appreciate having more than just the clothes on your back.

How to Store an Evacuation Kit

1. You should take proactive steps to create a kit that you can take with you in times of an emergency that will last you for two to three days. It should be lightweight and easy to carry.
2. Store these items in something that is portable and easily carried, like a backpack or tub/suitcase with wheels. Place items in plastic bags to protect against water. Plastic bags used for produce (like apples and oranges in a grocery store) could be a good choice. These can later be used for disposing of waste.
3. Locate these supplies as close to your primary house exit as possible. You may have to find it in the dark or after the upheaval of an emergency. A coat closet may be a good place or as part of a car kit may work as well. Consider keeping this kit in your vehicle. Then, you will always have supplies with you.

Water

For this grab and go kit, keep a supply of water that will last you 2-3 days for each person in your household. ~ 1 quart per person per day. (See Water, Step Three). You could also purchase portable water filters or water sterilizers. Remember, a gallon of water per day includes cooking. If you do not cook with grab and go supplies, carrying less water is an option.

Food

Store a supply of food that will last you two to three days. Select foods that require no refrigeration or cooking, and little or no water. Purchase foods you like so it will be easy to rotate items near expiration and consider specific dietary needs as well as chemical/food sensitivity:

- High energy foods — peanut butter, granola bars, trail mix
- Comfort foods — cookies, hard candy, etc.
- Dry meats like beef sticks and jerky

Pet Grab and Go

Pets need a grab and go kit, too! Have two to three days of food, water, any of their medications, leashes and cages if reasonable.

Kit supplies

- Food Water Flashlight
- Extra batteries Light sticks
- Radio (battery/crank)
- Whistle
- Toiletries & wet wipes (save water for drinking)
- Access to important documents
- First aid kit
- Multi-purpose tool and knife
- Garbage/plastic bag
- Cell Phone charging cord/extra battery
- Medications
- Pet items
- Duct tape
- A set of extra clothes
- Hat and gloves
- Items you need for children and other household members

If this kit is used for your car, add:

- Small shovel
- Jumper cables
- Tow chain
- Road flare
- Waterproof blanket
- Matches in a waterproof container
- Seasonal equipment
- Extra keys

QUICK TIP: Rotate items annually. This includes making sure the clothes you have stored still fit.

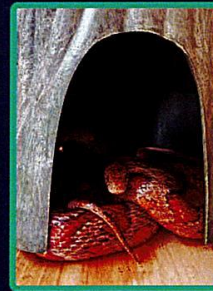
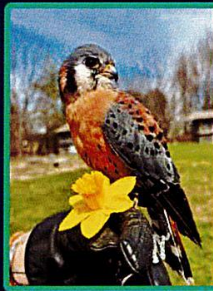
BUTLER WINERY PRESENTS



Wine & Wildlife

FEATURING

WINE TASTINGS • WILDLIFE ANIMAL AMBASSADORS
SILENT AUCTION • MERCH • MUSIC BY WINDOW PAYNE
FOOD TRUCK BY BETTY'S HOTDOGS • AND MORE!



ADVANCE TICKET SALES

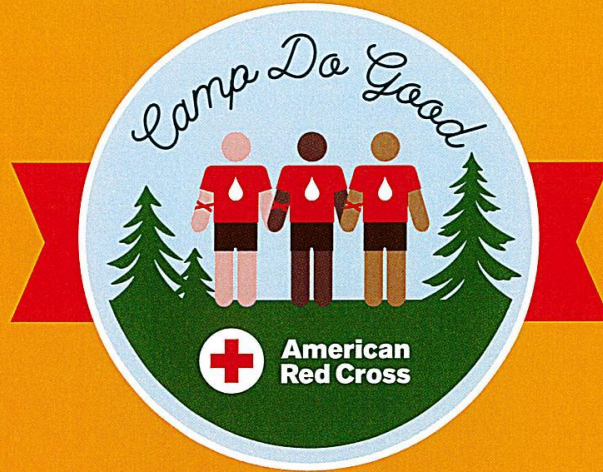
Scan QR code or visit givebutter.com/WWS25
AGES 21+: \$25 advance // \$30 day of event
AGES 13-20: \$10 advance // \$15 day of event
AGES 12 & Younger: FREE!!

June 7, 2025

6-9 PM (RAIN OR SHINE)

6200 E Robinson Road, Bloomington, IN 47408





DONATE BLOOD. HELP SAVE LIVES.

Blood Drive
First Presbyterian Church

Lyman Hall
221 E. 6th Street
Bloomington

Wednesday, June 18
2:00 p.m. to 7:00 p.m.

Please call 1-800-RED CROSS (1-800-733-2767) or visit
RedCrossBlood.org and enter: FPCBLOOM
to schedule an appointment.



Scan to be directed to
RapidPass®

Come to give June 1 to 30 for a \$15 Gift Card by email.



Scan to schedule
an appointment.

1-800-RED CROSS | RedCrossBlood.org | Download the Blood Donor App

© 2025 The American National Red Cross | 485801-1 CW

June 2025

St. Thomas Lutheran Church

Regular Sunday Schedule*

8:30 a.m. Worship/Livestream Worship

10:15 a.m. Worship

*see each Sunday for additional events

Office Closed

Thursday June 5, Friday June 6,

Friday June 13, Thursday June 19

Staff Out of Office

Pastor Adrienne

Friday June 6,

Monday June 23 – Sunday July 6

Pastor Lecia

Friday June 6

Erica Whichello

Monday June 2 – Friday June 13

Matt Benkert

Sunday June 29

Sunday	Monday	Tuesday	Wednesday	Thursday	Friday	Saturday
1 11:30 am GPS 2 pm Splash Pad Meet-Up at Switchyard Park	2 1 pm Pastor's Bible Study 7 pm Mission Committee Meeting	3 1:30 pm Altar Guild Meeting	4 12 pm Prayer at Noon on Zoom	5 Office Closed 5:30 pm Brown Bag Dinner 7 pm Adult Choir Rehearsal	6 Office Closed	7
8 Pentecost Sunday	9 10 am Worship at Redbud Hills 1 pm Pastor's Bible Study	10 7 pm Finance Committee Meeting	11	12	13 Office Closed	14 10 am Property Committee Work Day 10 am St. Thomas Piecemakers
15 The Holy Trinity	16 9:45 am Worship at Bell Trace 1 pm Pastor's Bible Study	17 10 am Property Committee Work Day	18	19 Office Closed	20	21 7 pm Summer Campfire and S'mores
22 11:30 am Council Meeting	23 1 pm Pastor's Bible Study	24	25	26	27	28
29 7 pm Ice Cream Meet Up	30 1 pm Pastor's Bible Study	<p>All dates and times are subject to change. Please confirm via the online church calendar: https://stlconline.org/about/news/</p>				

July 2025

St. Thomas Lutheran Church

Regular Sunday Schedule*

8:30 a.m. Worship/Livestream Worship

10:15 a.m. Worship

*see each Sunday for additional events

Office Closed

Friday July 4

Pastor Adrienne Out of Office

Monday June 23 – Sunday July 6

Sunday	Monday	Tuesday	Wednesday	Thursday	Friday	Saturday
		1	2 12 pm Prayer at Noon on Zoom	3	4 Office Closed	5
6	7 1 pm Pastor's Bible Study 7 pm Mission Committee Meeting	8	9	10	11	12 10 am Property Committee Work Day 10 am St. Thomas Piecemakers
13 11 am Outdoor Worship and Potluck	14 10 am Worship at Redbud Hills 1 pm Pastor's Bible Study	15 10 am Property Committee Work Day	16	17	18	19 9 am Christmas in July
20 7 pm Ice Cream Meet Up	21 9:45 am Worship at Bell Trace 1 pm Pastor's Bible Study	22	23	24	25	26
27	28 1 pm Pastor's Bible Study	29	30	31		

**All dates and times are subject to change.
Please confirm via the online church calendar:
<https://stlconline.org/about/news/>**

ST. THOMAS EVANGELICAL LUTHERAN CHURCH

3800 East Third Street
Bloomington, Indiana 47401
Office Hours 9 a.m. - 4:30 p.m.
Phone: (812) 332-5252
stlconline.org

Partners in ministry with
**Lutheran Church of
the Living Waters**
Cherokee, North Carolina

Linked with
Sister Parish
Iglesia Santo Domingo
de Guzman, Chichipate
Parish of San Pedro, El Estor,
Izabal, Guatemala

In covenant with
**Lutheran Campus Ministry
at Indiana University**
Rev. Amanda Ghaffarian
Campus Pastor
lutheran@indiana.edu
Phone: (812) 333-2474
lcmiu.org

Rev. Adrienne Meier
Senior Pastor
pastor@stlconline.org

Rev. Lecia Beck
Pastor of Youth
and Christian Nurture
christiannurture@stlconline.org

Erica Whichello
Parish Administrator
parishadmin@stlconline.org

Matthew Benkert
Director of Music and Organist
directorofmusic@stlconline.org

Ben Wegner
Adult Choir Director
choir@stlconline.org

Melissa de Graaf
Children's Choir Director

**St. Thomas Lutheran Church and LCM-IU
are Reconciling in Christ Ministries**

**We are a Christ-centered community that lives,
shares and celebrates God's grace with all people!**